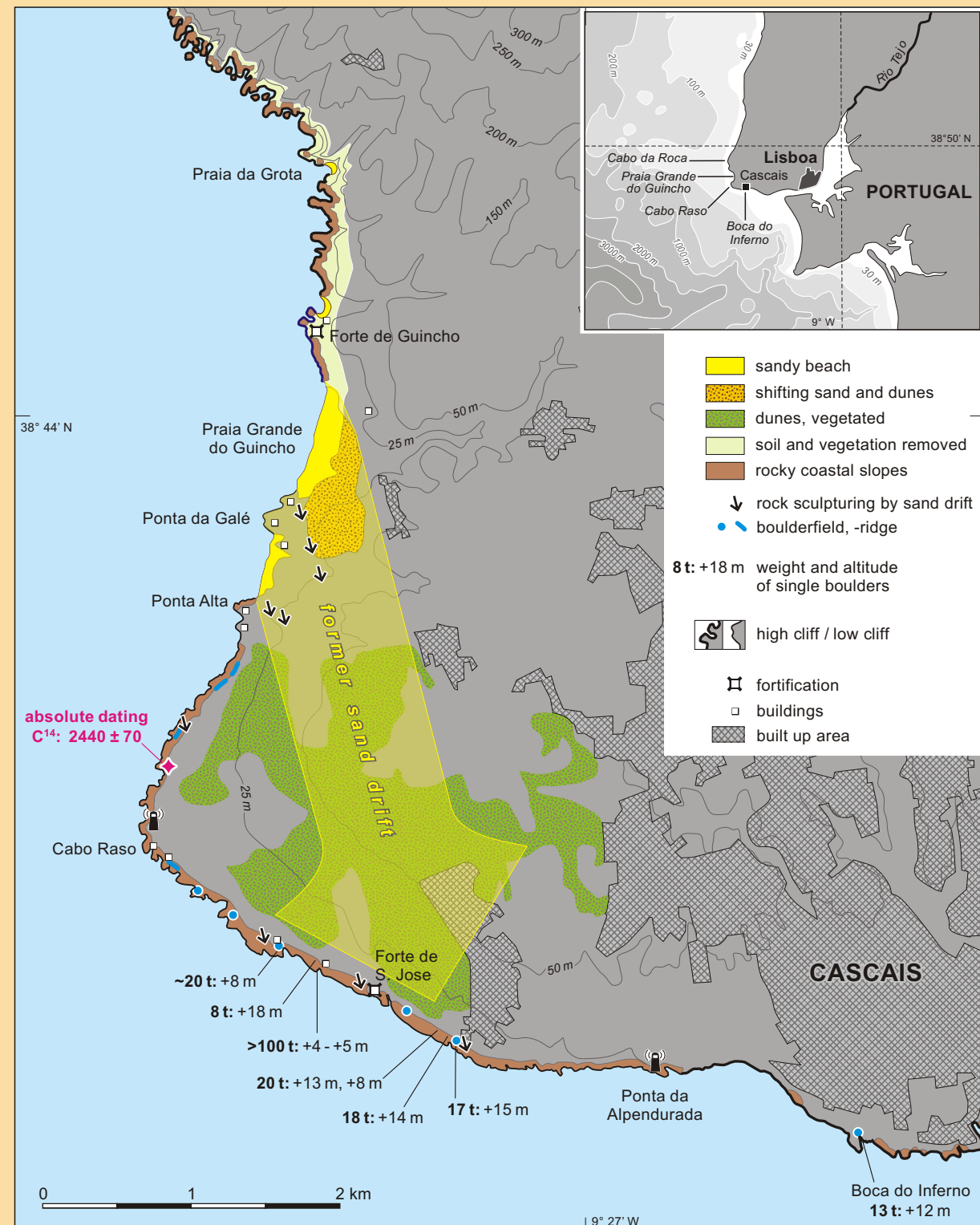


# Southern Europe – Paleo-Tsunami Evidence and Dating

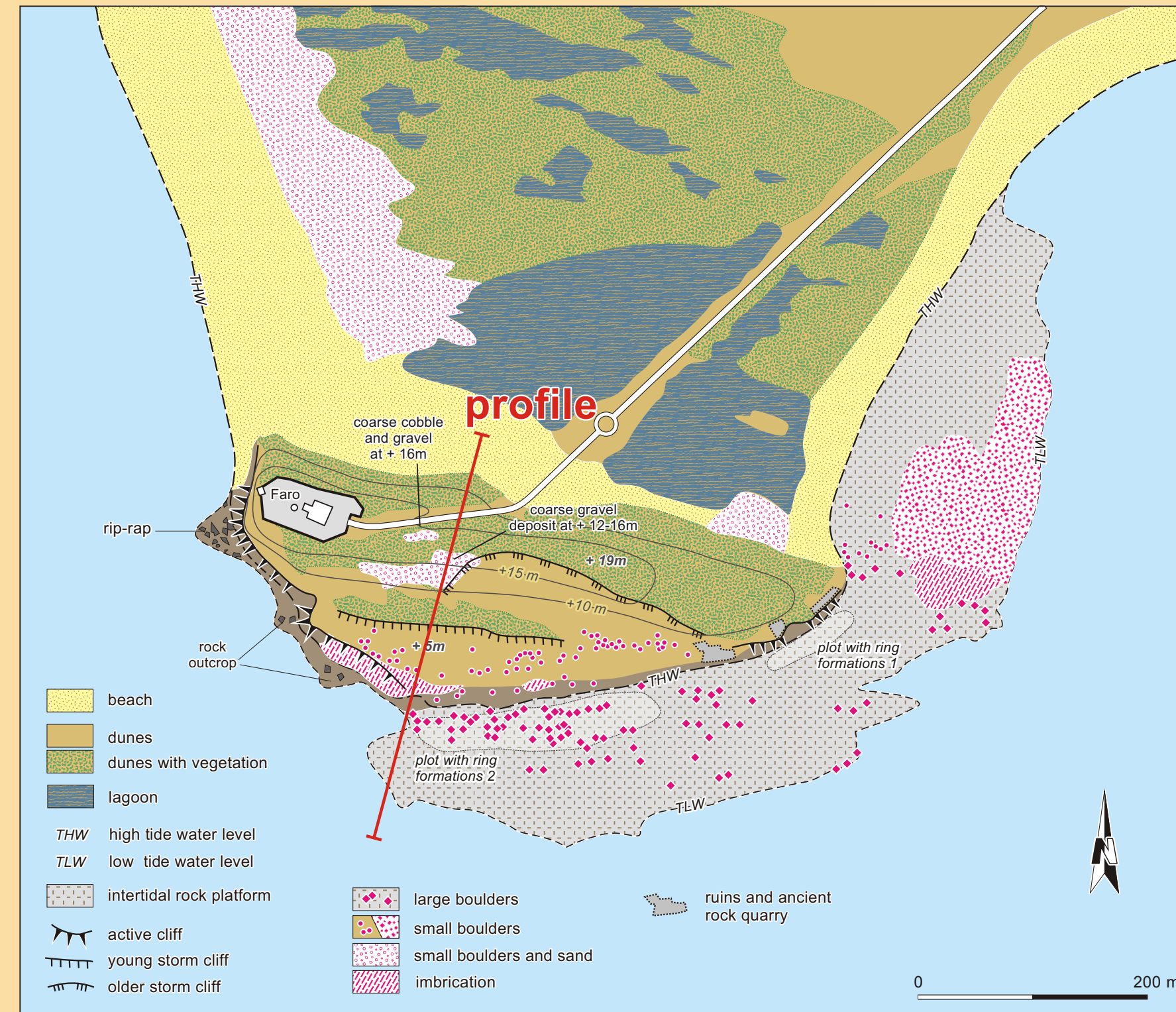
ANJA SCHEFFERS, DIETER KELLETAT, SANDER SCHEFFERS

University of Duisburg-Essen (Germany)

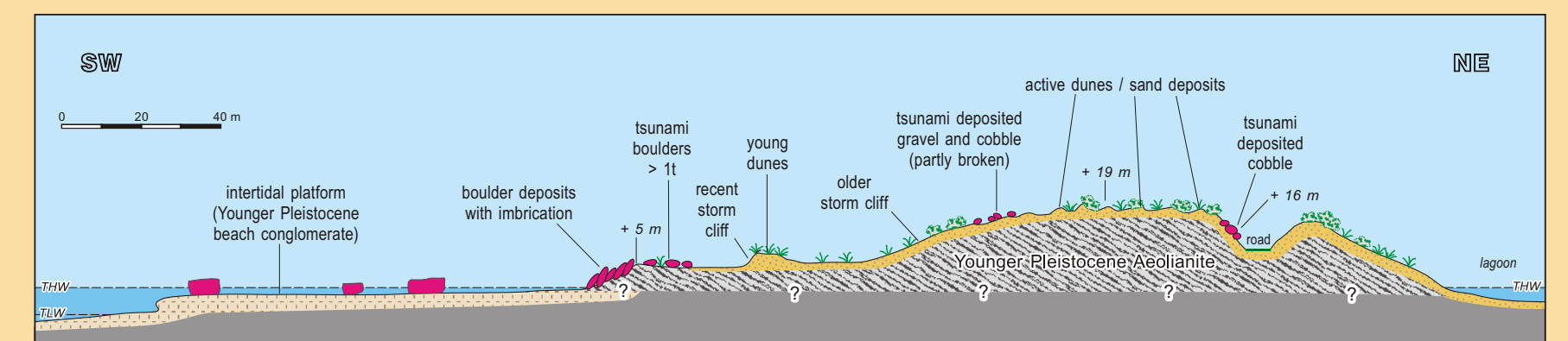
## PORTUGAL – Cascais



## PORTUGAL – Cabo Trafalgar



Tsunami boulders resting on the intertidal platform.



Bimodal tsunami deposits from the 1755 Lisboa Event.



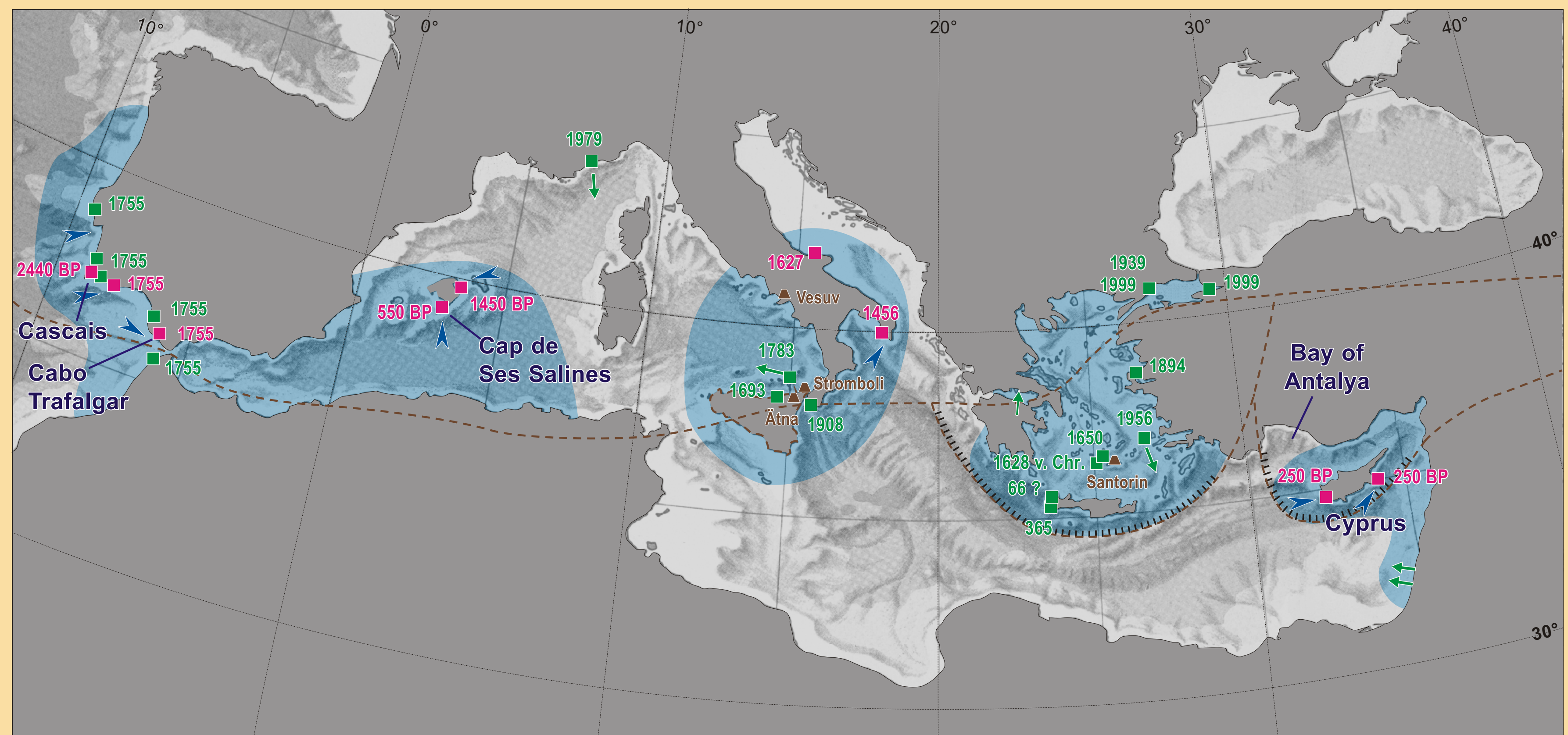
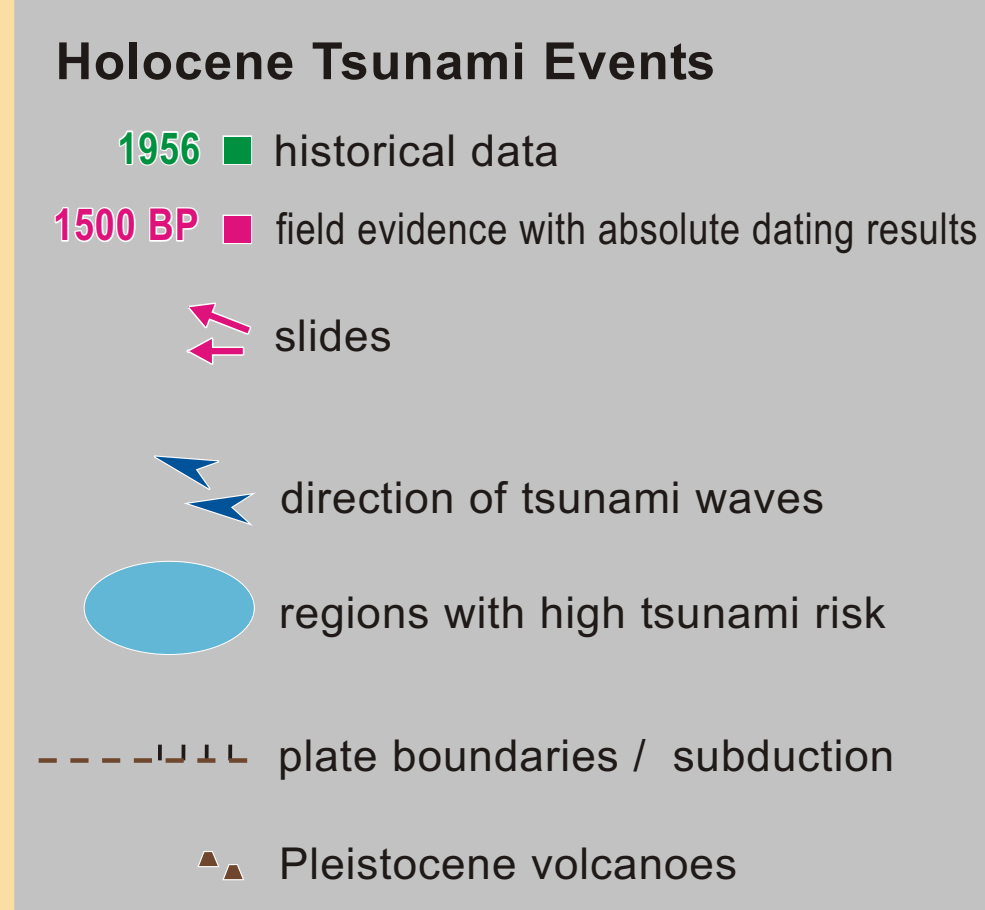
Tsunami boulders resting on antique stone quarry.

## MALLORCA – Cap de Ses Salines

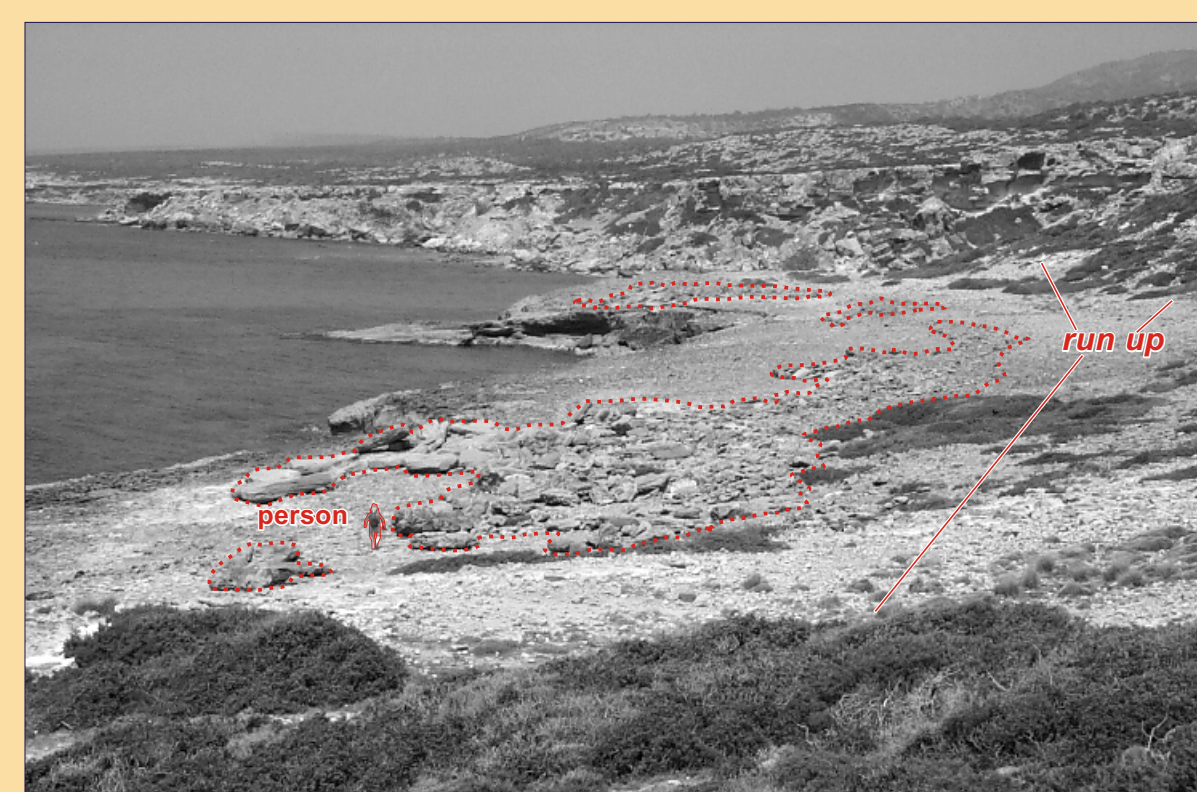
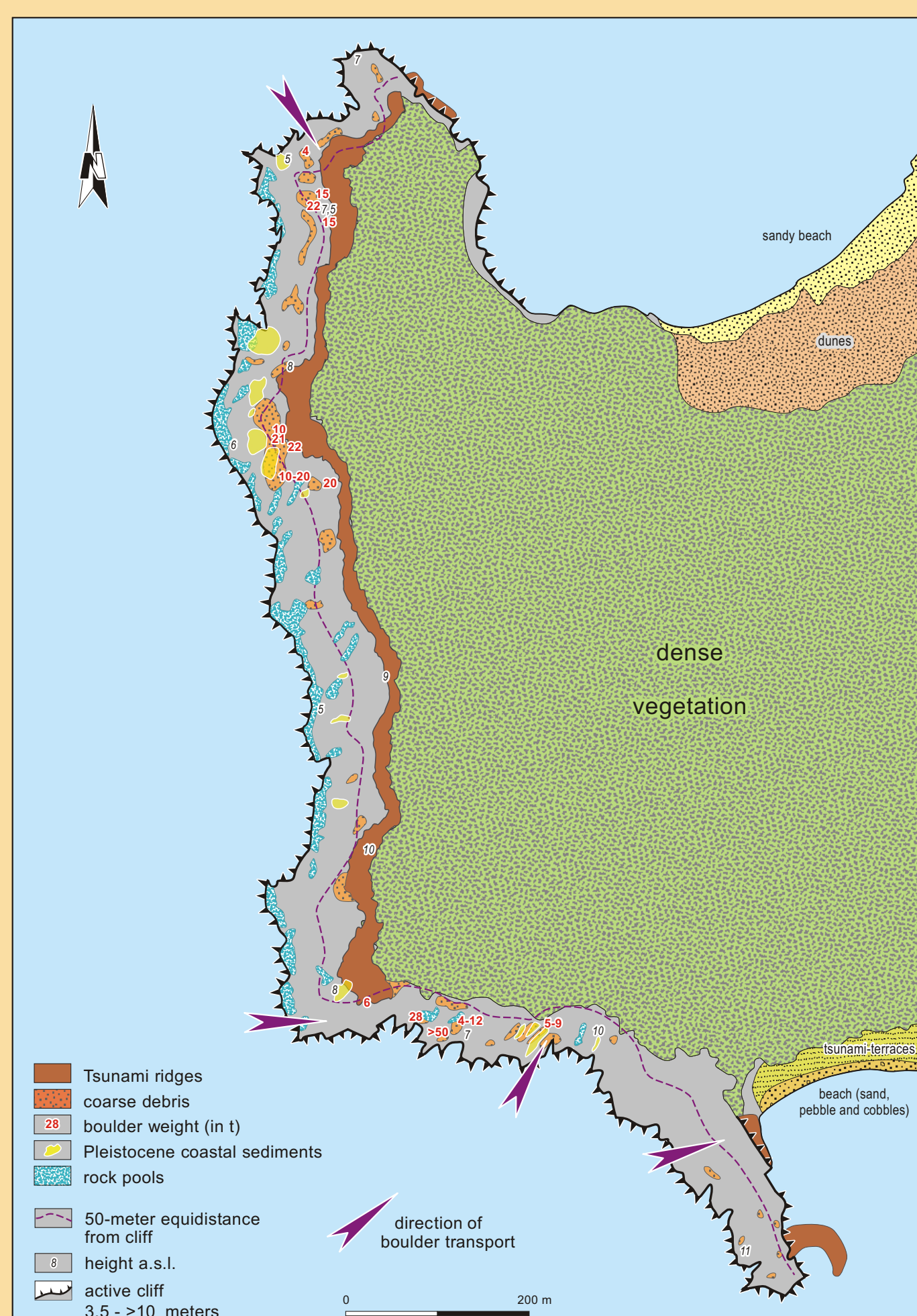


Tsunami boulder ridges at + 5-6 m asl with imbrication.

## Tsunami Events around the Mediterranean Sea

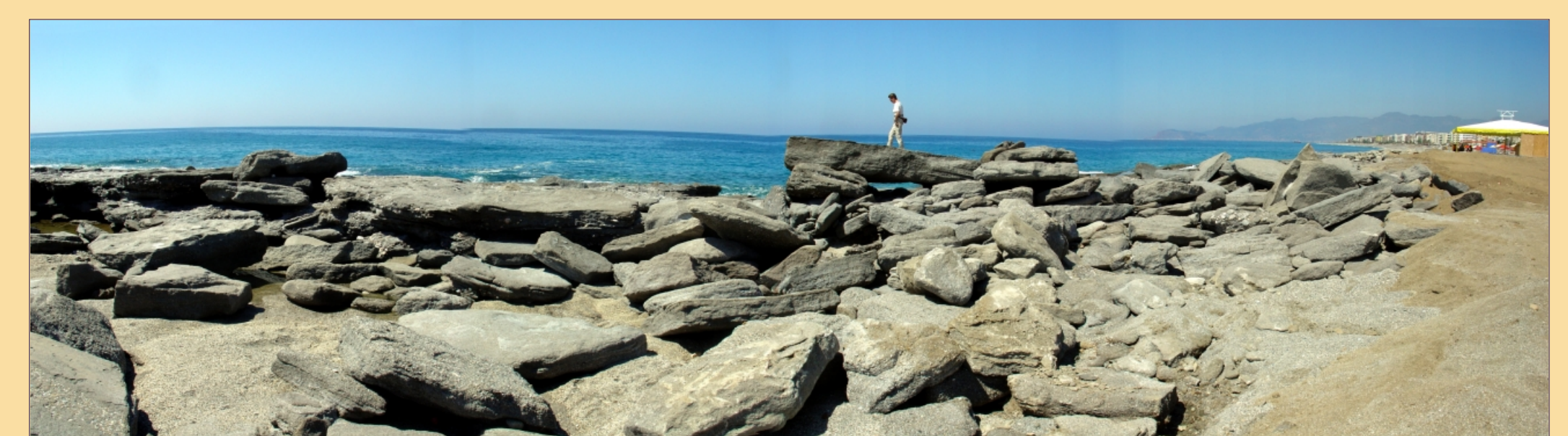


## CYPRUS – Lara Peninsula



Tsunami boulder ridge accumulated at + 5-10 m asl.

## TURKEY – Bay of Antalya



Tsunami boulders (not dated). Tsunami field research may complete the historical catalogues and give new insights of potential tsunami risk.

Tsunami run up at Akamas Peninsula reaching up to 800 m inland.



Bimodal tsunami deposit.